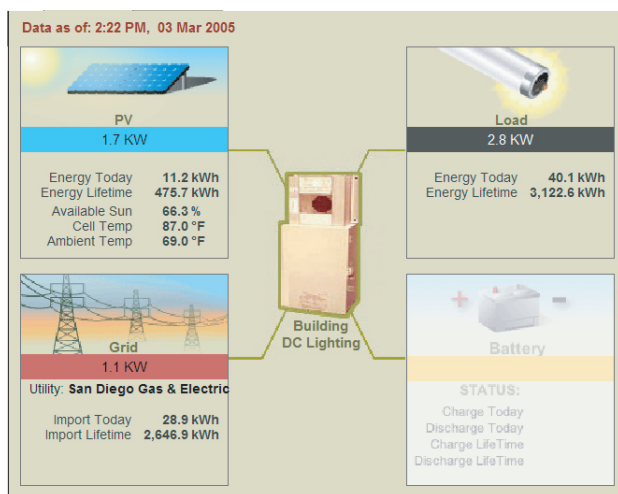




NEXTEK Power Systems, Inc.

Energy System Monitoring and Control



Effective, web-based monitoring offers an appealing display and verifies that the system is operating at peak performance.

NEXTEK's monitoring system provides an easy-to-understand, graphical display of the performance of the system. This web-based, password protected analysis can also be made available in a kiosk for visitors to the site.

Performance of each system component is measured and transmitted through a CAN bus to the centralized Master Events Controller (MEC). Common monitoring points include:

- Solar irradiance, wind, and temperature data
- Performance of other devices such as inverters
- Data from utility meters and submeters
- Status of (optional) batteries

The MEC consolidates the data and sends it through the local network or a dedicated DSL line to our processing website that creates the graphical display. Graphics are customized based on the specific application, and the level of security needed. The information can be accessed through our website, or intergrated into the customer's own site.

NEXTEK's Master Events Controller can be remotely controlled. This is ideal for locations where load shedding can save significant energy costs. All data is archived for future reference.

Benefits of the Nextek monitoring system include:

- Remote load management - shut off non-critical building loads when the rates are high.
- Preventative maintenance - observe the building loads and know when maintenance is required.
- Advertise the existence of a renewable energy system and its performance.
- Meet the requirements of performance-based incentive programs.

The Nextek monitoring system is an important part of any Nextek system. As well as providing a visual display of the generation system, the load, and other energy-related aspects of the building, it allows for remote control.

Enhanced displays such as front-lobby Kiosks, custom displays, and web designs are available.

The most efficient way to manage locally generated energy is to consume everything you generate; where, when, and how you generate it.

For more information, see www.NextekPower.com or email info@NextekPower.com

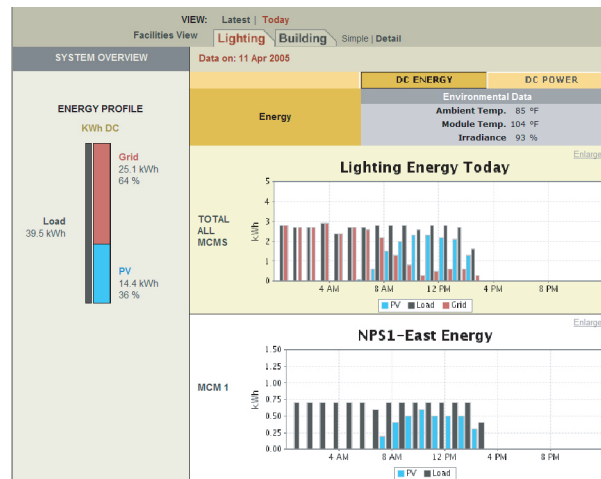
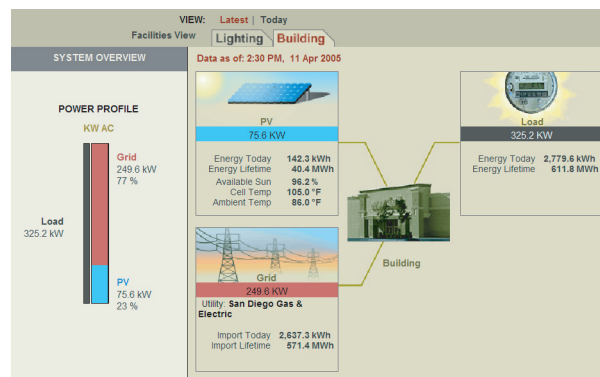
Nextek Power Systems, Inc 89 Cabot Court, Suite L, Hauppauge, NY 11788 (631) 750-1000



NEXTEK Power Systems, Inc.

Energy System Monitoring and Control

Energy System Monitoring hardware	Internet Monitoring capabilities
5 CAN Bus input/output connectors	Building Energy Profile: PV, Grid, Load
RS-232 connector	Lighting System Profile: load, performance
X-PORT connector	DC Power, DC Energy, Environmental data
32 Bit MCODE processor w/ 64M RAM	Cumulative production statistics
4 Auxiliary relay contacts	
Monitoring Points: NPS Power Routers, weather and insolation data, utility meter, other.	
Specifications subject to change without notice	Five Year Warranty



For more information, see www.NextekPower.com or email info@NextekPower.com

Nextek Power Systems, Inc 89 Cabot Court, Suite L, Hauppauge, NY 11788 (631) 750-1000